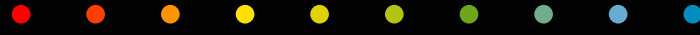


Pixeline Flex



VNL-F4025F

Make buildings stand out with curved façade lighting. The **easy-to-install** and control Pixeline LED strip connects into **endless** colored light lines without visible seams or variations in light intensity. **Innovative, sustainable, and super easy.**

Applications

Illuminating buildings facades, Accentuating building, Event lighting and decoration, Illuminated signage, Landscape illumination, Lighting art installations,

...





Endless colored
light lines



Wide light
surface
40 mm



Convenient
2 part design



uniform light
no dark spots



IP68 protection

Product description

The ultralong modular Pixeline is the ideal flexible RGBW LED strip to illuminate architecture. Able to take on custom shapes and designs, it easily elevates the visual allure of buildings, events or landscapes.

The virtually endless Pixeline was designed with functionality and durability in mind. The pre-cabled design has an external diffusive silicone casing that guarantees an all-weather IP68 sealing and an even distribution of light.

This concept ensures that the strips – with an already impressive maximum length of 50 meters – can be conveniently linked together for an infinite length. Completely seamless and with homogeneous light intensity over the full length. The user-friendly modular design allows convenient and safe replacement of individual components, extending the product's lifespan and reducing costs.

The wide-format (40mm) RGBW LED strips with a light output of 460 lumens per metre, operate on a safe 24V DC with low power consumption. As they are pixel-driven, they allow users to seamlessly integrate animations or video (DMX / SPI) for a wide range of breathtaking applications.

Modular system



Diffusive silicon tube



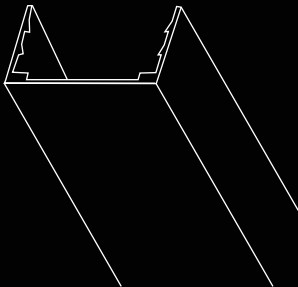
IP68 LED strip with built-in cables



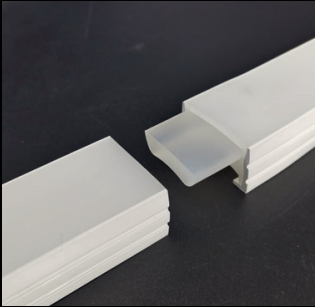
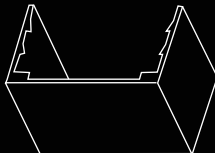
Aluminium mounting clip

Mounting

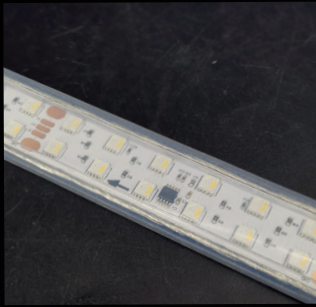
Straight line:
extruded aluminium
profile



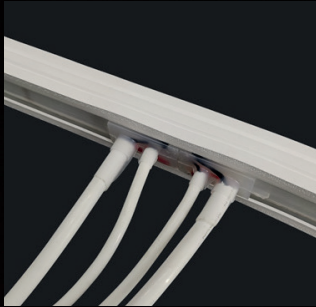
Curved:
mounting clip



Invisible connector



Onboard auto addressable decoder



IP68 LED strip



Aluminium mounting clip

Sustainability

The Pixeline flexible RGBW LED strip was designed with sustainability in mind. The modular design ensures that all parts can be easily replaced. This cost-effective approach increases the ease of updating without having to replace the entire system.

Additionally, work was also done towards a remarkably low consumption of the lighting installation. Using super-efficient LEDs the Pixeline requires minimal electricity via a safe 24V connection.

In an effort to make the LED strip even more ecological, it is fully remotely programmable and manageable. This means that the installation can be controlled so that the lights only are on when it makes sense. Thanks to the fully dimmable LEDs, brightness can also be controlled very precisely to avoid light pollution.

